

RFID & DATA CAPTURE IN HEALTHCARE LOGISTICS

LYNGSOE
X-TRACKING™



20th July 2022

Andrew James
aja@lyngsoesystems.com

www.lyngsoesystems.com

AGENDA

- Introduction Lyngsoe Systems
- Rethinking Hospital Logistics
- Data Capture - X-Tracking™
- Technology – Barcode, Passive, Active
- Importance of integration
- Live Demo
- Questions



Aars, Denmark
HQ – Sales/Project
Manufacturing



Ontario
R&D Facility



Maryland
Sales/Project



Lincs/Cambs
Sales/Project



Kerava
Sales/Project
Manufacturing



Hamburg
Sales/Project

SOLUTIONS FOR SMARTER LIBRARIES

Enter smart library solutions



WALSALL NHS TR

"We couldn't fault 2CQR's delivery on this project. Their pre-installation visit enabled us to plan with them, not just the practical positi..."

[Read More »](#)



THE HEART OF ENGLAND FOUNDATION TRUST

"2CQR were able to deliver on all our specific requirements and we were particularly impressed with their commitment to long-term partnershi..."

[Read More »](#)



EDINBURGH NAPIER UNIVERSITY LIBRARY

"As long time holders of Customer Service Excellence accreditation the university prides itself on working with the best and 2CQR's presenta..."

[Read More »](#)



LIBRARIES IN CLACKAMAS COUNTY

Switch to an AMH central sorting system made materials handling easier

[Read More »](#)



AIRPORTS & AIRLINES



CUSTOMS & SHIPPING

STREAMLINE YOUR LOGISTICS AUTOMATION

Enter intelligent logistics solutions ▾



MANUFACTURING & SUPPLY CHAIN



HEALTHCARE



POSTAL & LOGISTICS



IPC – International Postal Corporation
80% of Worlds Postal Companies
Quality of Service & performance measurement

postnord
an post

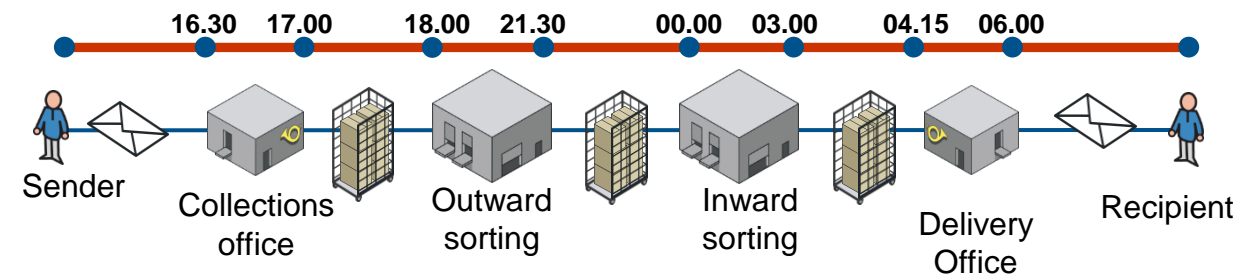
Posteitaliane

Hongkong Post
香港郵政

CANADA POST POSTES CANADA



- ✓ Quality of Service and Performance measurement
- ✓ 400+ sites and 3000+ measurement points across the UK network





CASE STORY



Full visibility on Container and Products via tracking with RFID

- Optimized business processes
- Real-time overview
- Less errors – Improved quality
- Improved assets utilization
- Reduced cost – Less manual registrations, Less manual control and Automatic load control

RETHINKING HOSPITAL LOGISTICS

- ❑ Challenges scale/size of a busy hospital
- ❑ Visibility & utilisation of assets, equipment, resources
- ❑ Patient safety
- ❑ Operational efficiency
- ❑ Forecasting, demand planning
- ❑ Transformation, adapting to change
- ❑ Implementing Standards

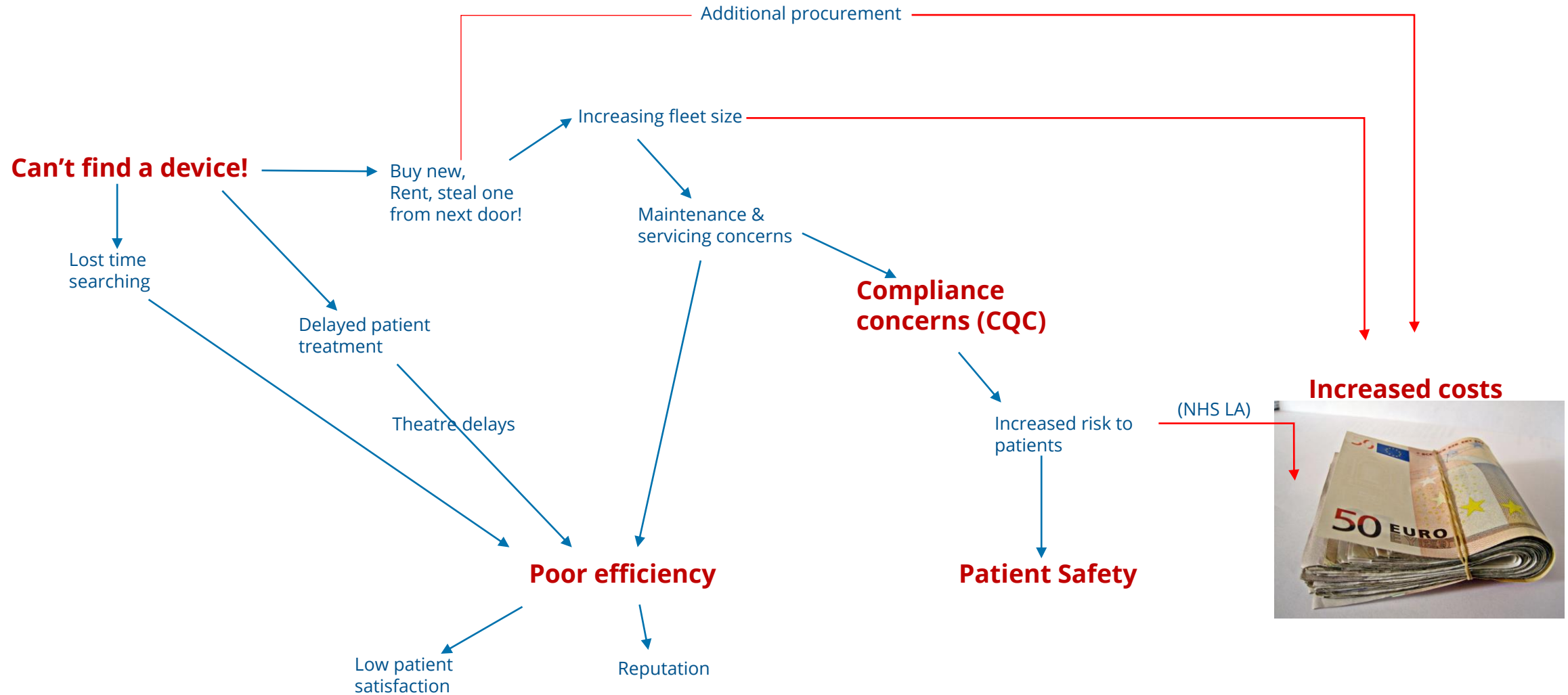


VISIBILITY OF MEDICAL DEVICES

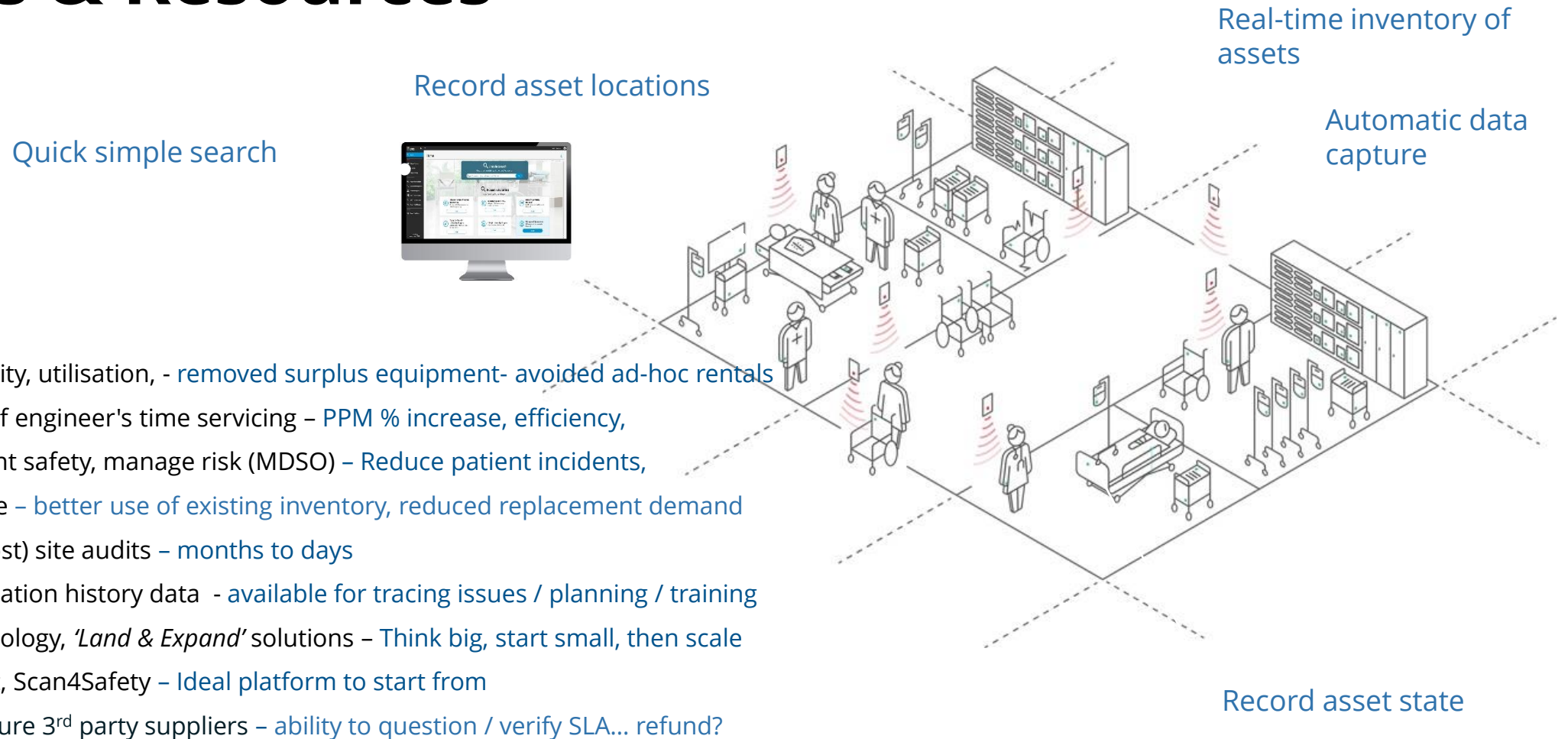
- Where abouts are the...?
- How many have we got?
- Are they safe for patient use?
- Regulatory compliance (CQC)
- 3rd Party Suppliers
- Recalls



Assets -Impact of *'unable to supply'*



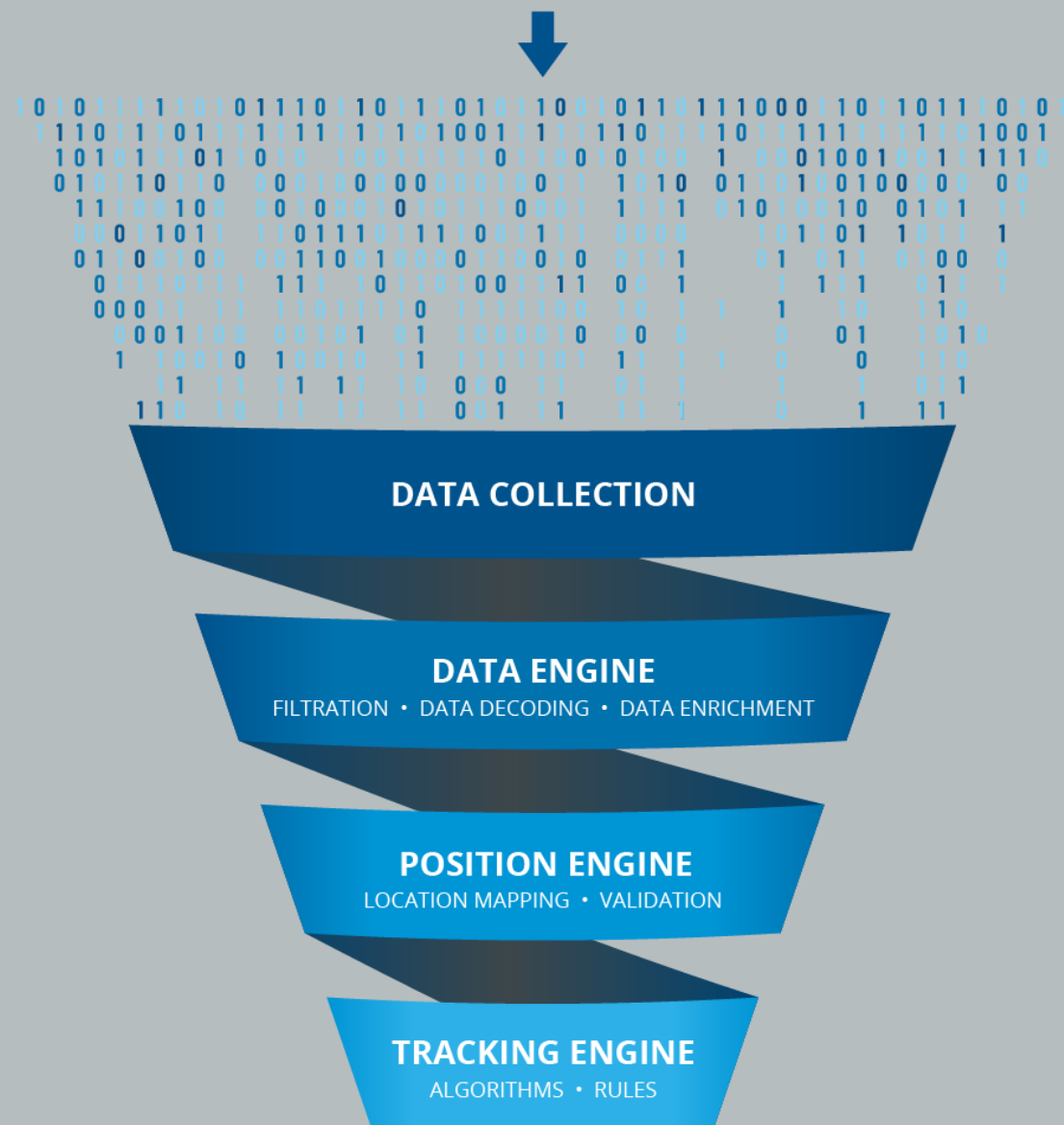
Tracking Medical Devices, Assets & Resources

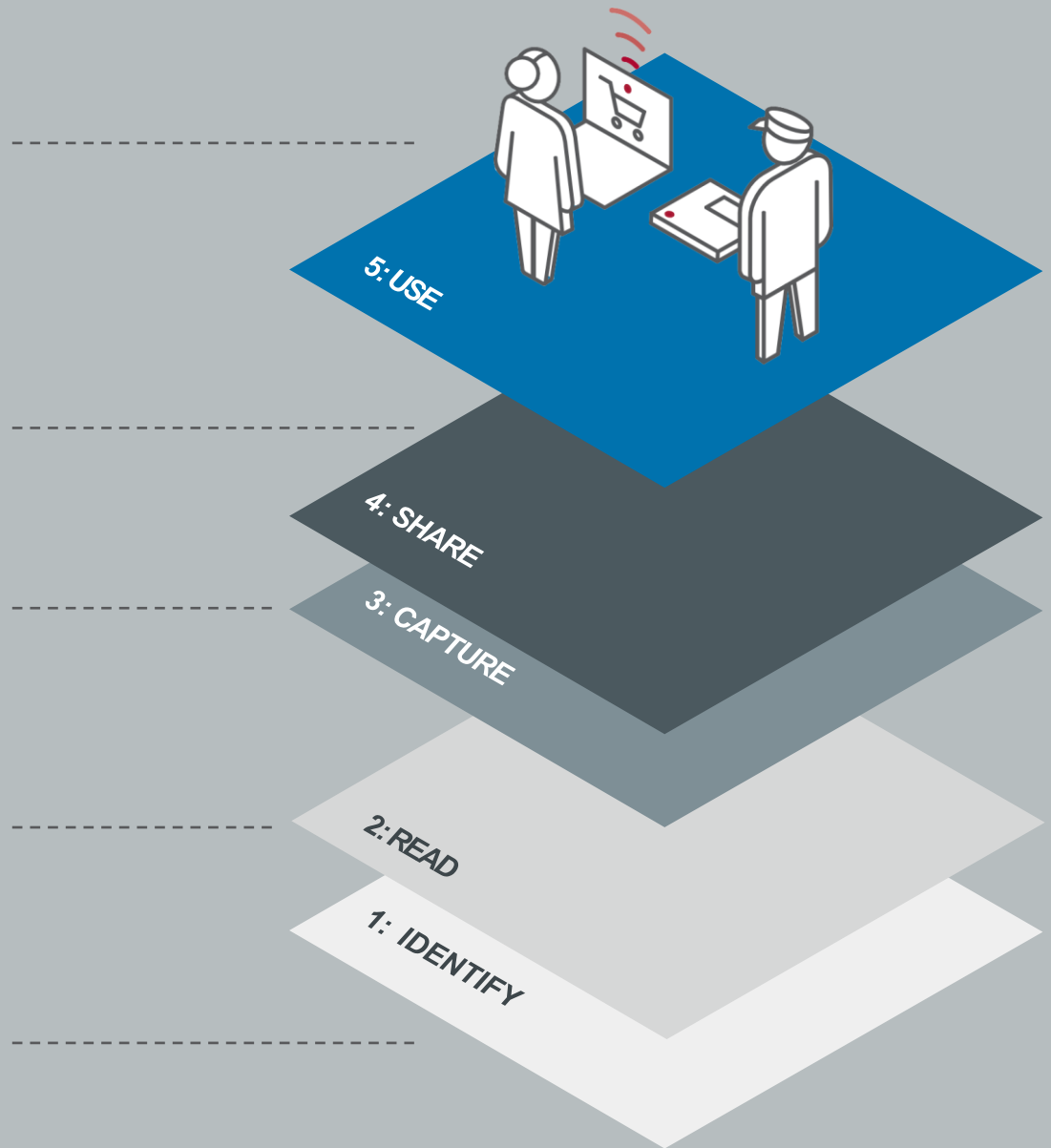
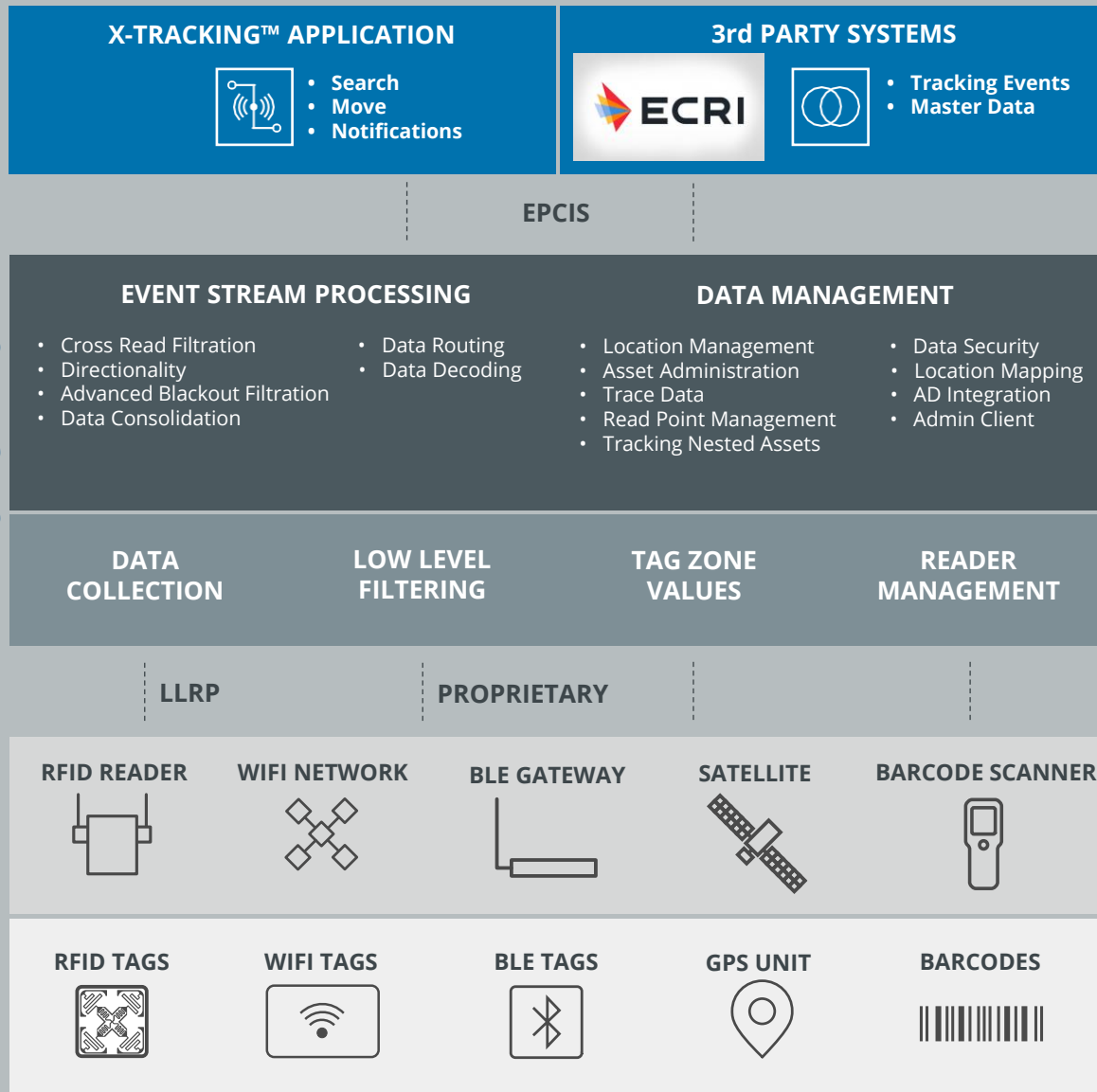


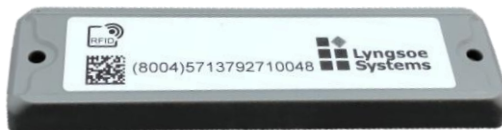


CONNECTING PHYSICAL FLOW TO THE DIGITAL LANDSCAPE

- Support multiple use cases
- Provide visibility of workflow
- Scalable solutions to fit present and future needs
- Based on international data standards
- GS1 Data Capture Application
- Supporting GS1 guidelines and Scan4Safety







PASSIVE UHF RFID TAGS

- Enable automatic tracking at a very low cost per asset
- Wide selection of RFID labels/tags for multiple use cases – Lyngsoe Systems has vast experience.
- Labels supplied in rolls 1000 Pre-Printed Encoded or Pre-Printed only (two colour, 1000 per roll, MOQ apply)
- Labels are durable to withstand regular cleaning
- Zip tie solution for on-metal applications
- Specific on-metal tags available
- High performance reliable RFID label printer encoder
- X-Tracking™ manages GS1 numbering process
- Specialist tags can be GS1 encoded and laser marked



ACTIVE RFID

- X-Tracking™ works with multiple technologies
- BLE low energy tags
- Mesh based network options, low-cost tags
- Up to 5-year battery life
- Wire free 'Mesh' nodes connect via Gateway





CASE STORY

NHS Lothian CSSD/Med Physics

X-Tracking™
integrated with;



- 4 main acute hospitals, 14 remote sites
- CSSD tracking sets, endoscopes, dental cassettes
- Case cart tracking with nesting
- Clinical engineering tracking medical devices across sites
- Passive RFID UHF – c.40,000 tags
- Autoclavable tags for SDU
- 450 Fixed readers plus mobile & handheld data capture
- GS1 standards





Aarhus University Hospital

CASE STORY

AARHUS UNIVERSITY HOSPITAL

Medical Device and Staff Tracking

- 1 location 450,000 sqm.
- 400,000 medical devices and other assets
- 100,000 RAIN RFID Tags
- 500 Active Bed Tags
- 1000 RAIN RFID staff tags
- 2400 RFID Readers 5500 antennas
- Integration to Systematic Task Management Software

Benefits

- Reduced time in finding assets, equipment and colleagues
- Effective utilization of equipment & consumables
- Improved real-time data in the workflows & logistic processes



CASE STORY

Kings College Hospital – London New Project 2022



- Medical Device Tracking with Integration to ECRI Aims
- Medical Equipment Library & Wards

- Passive RFID & GS1 Standards
- Fixed passive RFID with antennae choke points
- Fixed passive RFID with multi antennae array
- Mobile Data Capture Cart
- Handheld Data Capture
- Assorted Passive RFID GS1 asset labels

Expected Benefits:

- Automate the current manual equipment loan booking process
- Reduce the amount of time clinical and engineering staff spend searching for devices.
- Improve utilisation levels of equipment
- Improve compliance (preventative and corrective maintenance, safety alerts, etc.) and facilitate inventory audits.



RFID TAGGING EXAMPLES





RFID TAGGING EXAMPLES





RFID TAGGING EXAMPLES





Sterile Tray Tracking

Management of sterile trays
Track from SDU to individual theatre stores
Record usage
Integrate with sterile processing software

RFID tags withstand sterilisation cleaning processes at high temperatures 134-137 deg C





HOSPITAL READER

Real-time registrations of RFID tags



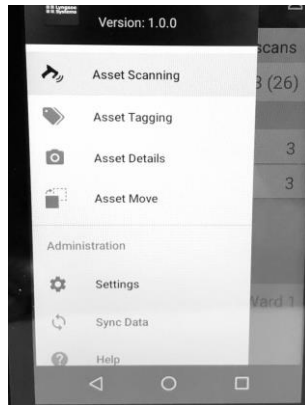
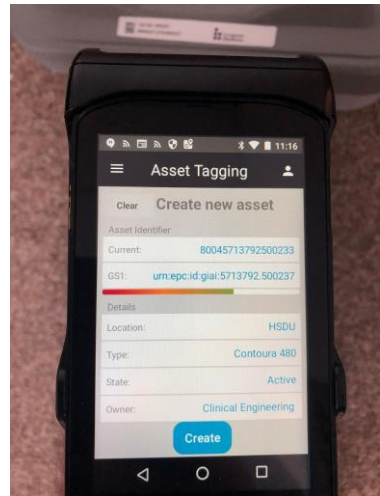
RFID HOSPITAL READER

Key features:

- Provides accurate real-time registrations of RFID tags
- Reads and locates multiple assets at the same time
- Easy to install
- Covers doorway with 2 logical reading points.
- Connects to PoE
- For indoor use

The RFID Hospital Reader consists of:

- 1 RFID Reader
- 2 RFID Antennas
- 2 Antenna Cables (6m) with colored markers
- 2 Antenna Test Tags
- 1 Ethernet Cable (Cat6 UTP) – for PoE option
- Ceiling mounting kit options



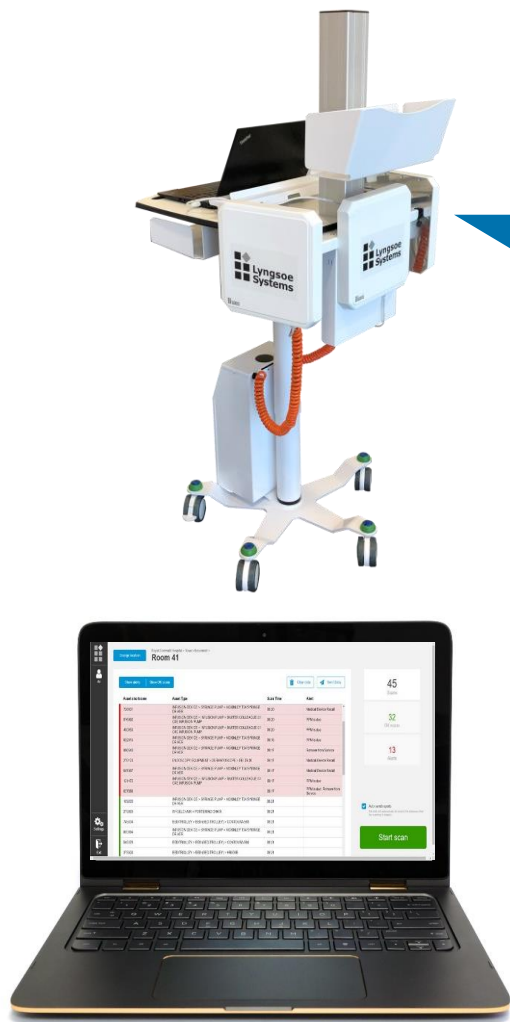
RFID HANDHELD TERMINAL

Key features:

- Scanning barcodes and RFID tags on assets
- Features: Asset move, Nesting, Seek asset
- Alert Notifications, such as "service overdue"
- Special features: Asset Tagging with RFID signal strength gauge for testing RFID tag placement
- RFID tag coding
- Android based App – working offline
- Excellent operational battery life
- Touchscreen, durable for environment
- BLE connectivity

The RFID Handheld Terminal consists of:

- 1 RFID Terminal
- 1 Charger



MOBILE DATA CAPTURE CART (MDCC)

MOBILE DATA CAPTURE CART

Key features:

- Rapid accurate audit tool - highlights assets overdue PPM service alerts
- Proactive risk management tool
- 270° field of view
- Detection up to 10m with passive UHF tags
- Data capture off-line
- Easy to manoeuvre
- Adjustable working height
- UPS power supply

The Mobile Data Capture Cart consists of:

- 1 RFID Reader, 3 RFID Antennas
- 1 laptop (provided by hospital)
- 1 workstation on wheels with UPS



WE ARE **FRONT
RUNNERS**, NOT
NEWCOMERS

WE ARE AN
**EXPERIENCED &
DEDICATED** TEAM

EXPERIENCE

+40

COUNTRIES

59

HQ

DK

INSTALLATIONS

5000

BUSINESS UNITS

6