



Gaumard®
Simulators for Health Care Education

Newborn PEDI® S109

Newborn Skills Trainer

- Anatomically accurate oral cavity and airway
- Visible chest rise with assisted ventilation
- Realistic chest compression and recoil
- Fontanelle, umbilical, brachial, and femoral pulses
- IV cannulation, umbilical artery catheterization, and IO infusion

Advanced Neonatal Skills Training

With its anatomically accurate features and lifelike feel, Newborn PEDI® introduces a new level of realism to neonatal procedural skills training.

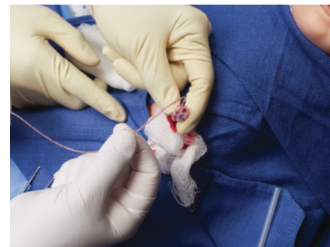
- Airway intubation
- Resuscitation
- IV cannulation
- Umbilical catheterization
- IO infusion
- Lumbar puncture
- Pulse palpation



Anatomically accurate epiglottis, glottis, trachea



IV sites support bolus, infusion, and sampling



Umbilical access, sampling, and continuous infusion



Lumbar puncture needle insertion and sampling

Features

- Full-term neonate 8 lbs, 19.5 in
- Smooth full-body skin
- Articulated limb joints with full range of motion
- Detachable umbilical cord
- Palpable lumbar landmarks
- Flexible spine

Airway

- Anatomically accurate oral cavity and airway
- Oral and nasal endotracheal intubation
- Supraglottic airway insertion • Sellick maneuver
- Positive pressure ventilation • Suctioning

Breathing

- Visible chest rise with positive pressure ventilation
- Chest tube insertion (unilateral)

Cardiac

- Realistic chest compression and recoil
- Palpable pulses: fontanelle, umbilical, brachial, and femoral (manual)

Vascular Access

- IV cannulation: bolus, infusion, and sampling
 - » Hand
 - » Scalp
 - » Umbilicus
- Umbilical catheterization (UVC/UAC): access, continuous infusion, and sampling

- Heel stick with blood draw (bilateral)
- Lumbar puncture: catheterization, infusion, and sampling
- Anterolateral thigh intramuscular injection (unilateral)
- IO tibial infusion (bilateral)

Gastrointestinal

- Patent esophagus
- NG/OG intubation and feeding
- Gastric suctioning
- Stoma care: ileostomy, colostomy, suprapubic
- Urinary catheterization with return
- Interchangeable male and female genitalia

Newborn PEDI®

S109.PK

Newborn PEDI, genitalia, stomas, umbilical cords, chest tube sites, IO bones, heel stick sites, lubricant, IV filling kit.

Request a quote

Sales / customer service
sales@norsomedical.co.uk (NI)
sales@norsomedical.ie (ROI)

Website

www.norsomedical.com

Phone Number

Call 9:00 a.m. - 5:00 p.m.
 Monday - Friday
 02890 343927 (NI)
 01 5314337 (ROI)